



MIME CLOWN VISUAL THEATRE

LONDON 12-27 JANUARY 2002

www.mimefest.co.uk



7	Avner
13	Basil Twist
24-25	Booking Information
Back cover	Calendar
22	Circus Space Cabaret
9	Compagnie 111
17	Conservas
4	Critical Practice
5	Diquis Tiquis
8	Eric Bouvron
12	Fabrik
18	Ishka
14-15	Josef Nadj
11	Leandre-Claire
16	Lightwork
20-21	Marcello Magni
19	Maybellene
20-21	Ridiculusmus
10	Sharmanka
6	Spymonkey
20-21	Theatre O
23	Workshops

FOR THE LONDON INTERNATIONAL MIME FESTIVAL

Directors:
Helen Lannaghan & Joseph Seelig
Press Representative:
Anna Arthur PR (020 7637 2994)
Festival Assistant:
Shira Hess Thorne
Technical Manager:
Alison Fellows
Brochure/Website Design:
Iain Lanyon, Kean Lanyon (020 7354 3362)
Printed by:
Pinpoint Offset

LIME:
35 Little Russell Street,
London WC1A 2HH
Tel: 44 (0) 20 7637 5661
Fax: 44 (0) 20 7323 1151
e-mail: mimefest@easynet.co.uk
web-site: www.mimefest.co.uk

BOOKING INFORMATION PAGES 24 & 25



FOR DETAILS OF
DISABLED ACCESS
PLEASE CONTACT THE VENUES

A LARGE TEXT VERSION OF EVENT
LISTINGS IS AVAILABLE ON OUR
WEBSITE AT

WWW.MIMEFEST.CO.UK

The London International
Mime Festival gratefully
acknowledges
financial support from:

Arts Council of England.
CoPEC (Culture from
Catalonia).
French Embassy, Institut
Français du Royaume Uni.
Goethe-Institut London.
Irish Department of Foreign
Affairs/Cultural Relations
Committee.
London Arts.
SBC (registered charity).

With special thanks to the
Citadines Hotel group.



institut français



Compagnie Josef Nadj: page 14

In collaboration with the London International Mime Festival, Total Theatre Network presents:

Critical Practice 12

Music in Physical and Visual Performance

The role of the musician in the creation of new work is frequently overlooked. In the physical and visual performance sector, the spoken word is less important and music and sound are essential ingredients when creating atmosphere. This discussion will focus on the importance of music and how it affects the other elements of a performance. Speakers include: Mat Costain (Generating Company), David Lasserson (Gogmagogs, BBC Philharmonic Orchestra) John Martin (Pan Centre For Intercultural Arts). Back by popular demand, the discussion will be chaired by Dick McCaw.

The Voice Box, Royal Festival Hall:
Sat 19 Jan 3.00-5.00pm

£5 (£3 concs). Free for Total Theatre members.

For further details and to book tickets call 020 7729 7944 or email admin@totaltheatre.org.uk

Diquis Tiquis

Shy Shining Walls

London, Purcell Room
Sat 12 – Tue 15 Jan 8pm
020 7960 4242

Brighton, Komedia
Thu 17 – Fri 18 Jan 8pm
01273 647 100

Croydon Clocktower
Sat 19 Jan 8pm
020 8253 1030

Leicester, Phoenix Arts
Tue 22 – Wed 23 Jan 8pm
0116 255 4854

Aberystwyth Arts Centre
Thu 31 Jan, 7.30pm
01970 623 232



Diquis Tiquis

Shy Shining Walls

Purcell Room
Sat 12 – Tue 15 Jan 8pm
£12.00 (£8.50 concs)
Box Office:
020 7960 4242



Devised and performed by
Sandra Trejos and Alejandro Tosatti

Sensual, delicate and surprising, possessed with seemingly weightless qualities, *Shy Shining Walls* uses mime and movement to create an unusual physical language, inspired by Hispanic culture, martial arts, and the clowning, theatre and dance techniques of artists such as Pilobolus, Grotowski, Bolek Polivka and Martha Graham.

'Astonishingly moving and highly original'.

BALLET INTERNATIONAL

Runs approx. 65 mins
Presented in association with SBC

Avner Eisenberg

Avner The Eccentric

Purcell Room

Thu 17 – Sun 20 Jan

Thu – Sat 8pm, Sun 4pm

£12.00 (£8.50 concs)

Box Office:

020 7960 4242

American showbiz bible *Variety* calls him 'one of the world's greatest theatre clowns'. He's starred in productions at The Lincoln Center and on Broadway, with Michael Douglas and Kathleen Turner in the movie *Jewel of the Nile*, and has taken his solo show to festivals and theatres around the world. In an evening of sublime, skilled and sophisticated theatre clowning, Avner proves himself a dazzling magician, master of just about all the circus arts and a superbly gifted entertainer.

'Astonishing and funny. A clown for the thinking man'.
New York Magazine

Runs approx 80 mins

Presented in association
with SBC



Spymonkey

Cooped

Purcell Room

Wed 16 Jan 8pm

£12.00 (£8.50 concs)

Box Office: 020 7960 4242

Director: Cal McCrystal

A hit at last year's Festival with *Stiff*, Brighton-based Spymonkey returns FOR ONE NIGHT ONLY with its new show, once again set in a gothic world somewhere between Daphne du Maurier and Edgar Allen Poe.

A young girl arrives at the Cornish mansion of Count Murdston. Rich, beautiful, fawn-like, swinging...but a hostage to love, Laura du Lay knew the first day she met her mysterious new employer that life – and love – would never be the same again. And her an orphan! Is it too late? Is she already...cooped?

Non-stop gags, hilarious script devised by Cal McCrystal and the company – Total Theatre Award-winner Spymonkey comes up with another classic physical comedy spoof.

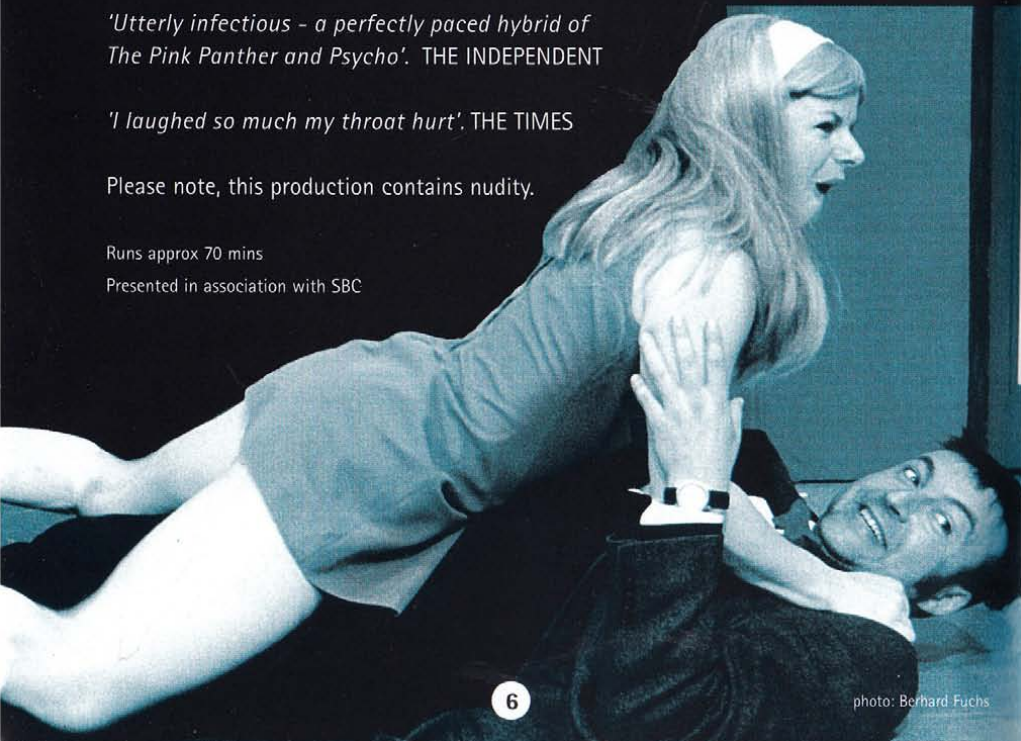
'Utterly infectious – a perfectly paced hybrid of The Pink Panther and Psycho'. THE INDEPENDENT

'I laughed so much my throat hurt'. THE TIMES

Please note, this production contains nudity.

Runs approx 70 mins

Presented in association with SBC



Eric Bouvron

Pantsula Jive

Queen Elizabeth Hall Foyer

Sat 19 - Sun 20 Jan 1pm FREE

A wickedly, wittily, entertaining tale of Eric's native South Africa, from rugby to rhinos, giraffes to gumboot dancers.

Unusual and charming, performed by a master of physical comedy who trained with Lindsay Kemp, Ariane Mnouchkine and Jacques Lecoq.

Runs approx 45 mins

Presented in association with SBC



Compagnie 111

I.J.K.

Purcell Room

Mon 21 - Wed 23 Jan 8pm

£12.00 (£8.50 concs)

Box Office: 020 7960 4242

A unique, new, eye-popping spectacle in which juggling balls become instruments of sound. Sensational to see, amazing to hear. You will be astonished. Jugglers Aurelien Bory, Olivier Alenda, and Katja Wehrlin who also plays accordion, are graduates of France's famous Lido Circus School. Their performing experience embraced work with Archaos, the World Circus Festival and Mladen Materic's Tattoo Theatre before setting up their own company in 1999.

Choreographed by specialist circus-theatre director, Christian Coumin (Les Acrostiches / LIMF 1998) *I.J.K.* has rapidly become one of the most sought after shows on the international festival scene.

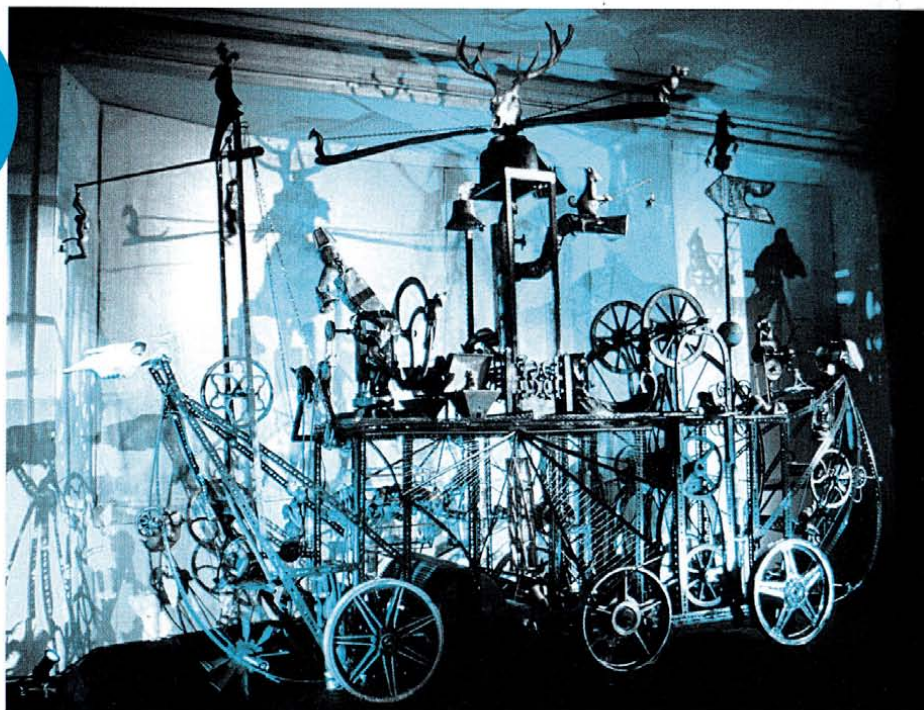
'Magical...a new circus form... an astonishing blend of performance and sound installation'. LE REPUBLICAIN

Supported by the French Embassy in London/
Institut Français du Royaume-Uni.

Runs approx 55 mins

Presented in
association with SBC





Sharmanka Kinetic Theatre

Noah's Ark

Royal National Theatre
Lyttelton Stalls Foyer, Ground Floor FREE
Sat 12 – Sat 26 Jan (closed Sundays)
11am, 12, 1, 2, 3, 4, 5, 6.45 and 10.45pm

Amazing kinetic performance art. Tiny carved figures and pieces of old scrap perform incredible Heath-Robinson-meets-Hieronymous Bosch choreography to haunting music and synchronised lighting.

Based in Glasgow since 1996, Sharmanka was established by sculptor Eduard Bersudsky and director Tatyana Jakovskaya in St. Petersburg in 1990. Their beautiful mechanical sculptures have been seen at festivals and galleries throughout Europe whilst others are in the permanent collections of such museums as Glasgow's Gallery of Modern Art and The Royal Museum of Scotland. Sharmanka makes its London debut with *Noah's Ark*, a piece specially created for the Mime Festival.

'Bizarre, hilarious, ghoulish, unmissable'. THE SUNDAY TIMES
'An icon painter for our times'. THE SCOTSMAN

FREE – Each performance runs 3 mins.

NT Royal National Theatre

Presented in
association with the
Royal National Theatre

Compagnia Leandre-Claire

Madame et Monsieur

Purcell Room
Thu 24 – Sun 27 Jan
Thu – Sat 8pm, Sun 6pm
£12.00 (£8.50 cones)
Box Office:
020 7960 4242

Inspired by the great silent movie era, *Madame et Monsieur* is a poignant tale of love in adversity. Two innocent waifs, rootless and homeless, imagine a home together filled with love, tenderness and joy. From this simple idea, mime-clown Leandre Ribera, dancer Clare Ducreux and their company have created a heart-warming story touched with poetry and magic. Not a word spoken, live piano accompaniment by David Moreno.

'Leandre is a master of ingenuity and transformation'. THE INDEPENDENT

'Nothing I've seen has more power than this mixture of poetry, humour and movement. It moves us, makes us smile, even laugh'.
LA MARSEILLEISE

Supported by CoPEC
(Culture from Catalonia)

Runs approx 70 mins
Presented in association with SBC

Fabrik

Petrified Skin

ICA
Sun 13–Tue 15 Jan
8pm
£11.00 (£8 cones)
inc day membership
Box Office
020 7930 3647

Devised and
performed by
Benno Voorham
and Wolfgang
Hoffmann.
Music:
Shostakovich

Made shortly after the fall of the Berlin Wall, *Petrified Skin* is the story of two former antagonists, victims of Cold War apartheid and separated by a hideous material obstacle. Breaking through brick and thought barriers, overcoming suspicions and prejudices, the two reach out to embrace each other in a friendship without fear. Movement, music and visual projection combine in a powerful work of physical theatre, its stark and universal message today more relevant than ever.

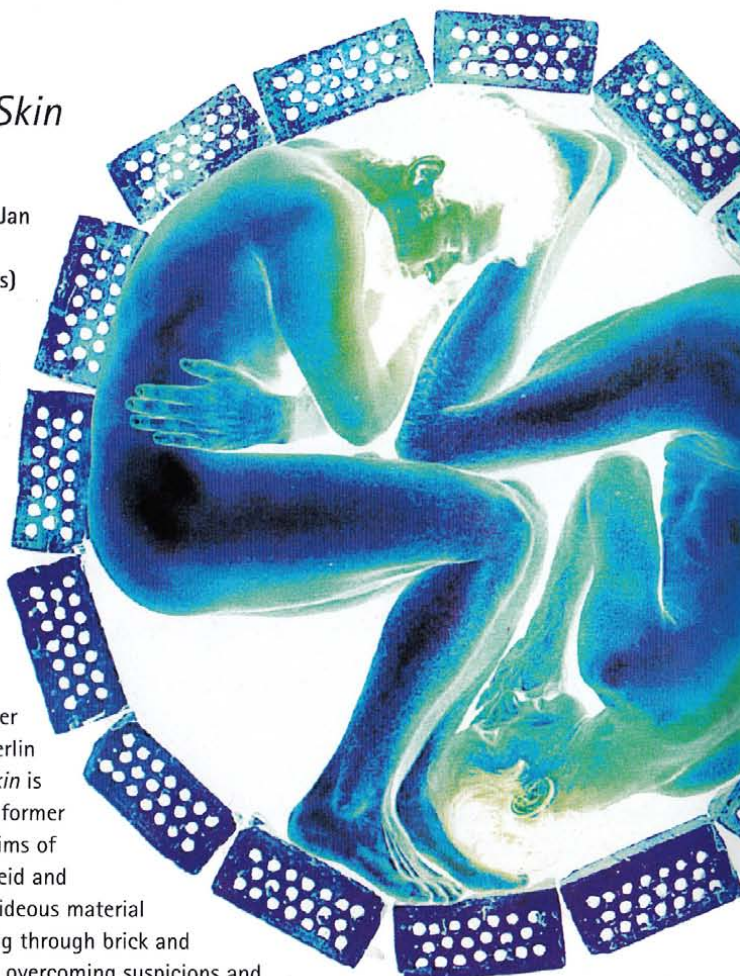
Scotsman Fringe First winner in 1999 for *Hopeless Games* (in collaboration with St.Petersburg's DO Theatre), Fabrik was literally born from the wreckage of the Berlin wall – its founders selling chunks of it to finance their theatre dreams.

'Exuberant physicality underpinned by practised precision, and there's also gentle humour as well as social comment'. The Herald

'Sometimes in the theatre simpler ideas produce better results. That is the case here. What I love about this performance is its unaffected honesty – and the sheer sweat of it'. The Guardian

Runs approx 60 mins

Supported by the Goethe-Institut London



Basil Twist

The Araneidae Show and Other Pieces

ICA
Thu 17 – Sat 19 Jan
Thu and Sat 8pm, Fri 7.30 and 9pm
£11.00 (£8 cones) inc day membership
Box Office 020 7930 3647

Following his recent commissioned production of *Petrushka* for The Lincoln Center, cutting edge New York puppeteer, Basil Twist, returns to the Festival with this acclaimed solo extravaganza of showgirls, lonely streets, cats, deconstructing theatres, sex, despair, magic, metamorphosis, and the fragile web of illusion sometimes called reality. From deep inside his puppet stage and himself, one lone puppeteer unravels, unveils, and unleashes this vulgar and spectacular story through the power of surreal imagery, baroque machinery, and the heartbreaking tiny gestures of his miniature actors.

'An uncanny experience that generates passion, daring and pure pleasure'.
New York Times

Runs approx 55 mins



photo: Bobby Miller

Compagnie Josef Nadj

Comedia Tempio

Queen Elizabeth Hall
 Fri 18–Sun 20 Jan
 Fri–Sat 7.45pm, Sun 6pm
 £10.00/£12.50/£15.00
 Box Office
 020 7960 4242



Josef Nadj

Three years since his acclaimed *Woyzek*, Josef Nadj returns to the Mime Festival with his international company from the Centre Choregraphique National d'Orleans.

Inspired by the life and works of Hungarian artist, writer, psychiatrist and opium addict Geza Csath who died at 32 at the turn of the 20th century, *Comedia Tempio* evokes the mysterious, hallucinatory world of Freud, Csath and Kafka's Central Europe. Somewhere between dance and theatre, with furniture, props and set having fantastic lives of their own, Nadj's visionary production – to the accompaniment of a haunting soundtrack by Gyorgy Kurtag collaborator Stevan Kovacs Tickmayer – takes you on an unforgettable rollercoaster journey through dream and nightmare.

Born in Vojvodina in former Yugoslavia, Josef Nadj moved to France in the 1980's, studying with Marceau and working with choreographers Mark Tompkins, Catherine Diverres and Francois Verret. He created the hugely successful *Cri du Camelot* for the French National Circus School, has been director of the Centre Choregraphique National d'Orleans since 1995 and with his own ensemble has toured all over the world. Don't miss this rare chance to see the work of one of Europe's most sought after choreographers.

'Wild, outrageous design...incredible balancing and acrobatics...Nadj's inexhaustible imagination has created an enchanted world of marvels.'

LE FIGARO

Runs approx 80 mins



photo: Lajos Somlasi

Co-production:
 Centre Choregraphique National d'Orleans,
 Theatre de la Ville – Paris,
 Festival d'Automne – Paris,
 Hebbel Theatre – Berlin,
 Les Gemeaux – Sceaux – Scene Nationale.

Supported by the French Embassy in
 London/Institut Français du Royaume-Uni.

Lightwork

London/My Lover

ICA

Mon 21 – Wed 23 Jan 8pm

£11.00 (£8 concs) inc day membership

Box Office 020 7930 3647

Director: Andy Lavender

London/My Lover follows two people through the course of a day in the city – the day on which they meet and become lovers.

Mixing video and physical performance, Andy Lavender's new show for Lightwork takes a close look at the ordinary detail of a life-changing day. Screened images show the texture of London as we never normally see it. The movement score of the two performers throws everyday activity into sharp relief. And in a series of flashforwards, the lovers' intimate observation of each other is presented by way of live camerawork.

London/My Lover is about the city made flesh and the body as a place of discovery. Made in London, it is a homage to the beauty, the dirt – the sheer presence of a modern metropolis. And it savours the erotics of desire, in a visual realm where every detail counts.

The performers are David Annen (work with Katie Mitchell, Mike Alfreds and Polish ensemble, Gardzienice) and ex-Snarling Beastie, Lucy Richardson.

On Lightwork's last production, *Blavatsky*:
'the new face of British drama'. THE OBSERVER

'A really intelligent piece of theatre that wholeheartedly embraces multi-media, but which is always characterised by its complete theatricality'.
THE GUARDIAN

photos: Pau Ros



Conservas

Femina Ex Machina

ICA

Fri 25 – Sun 27 Jan

Fri – Sat 8pm, Sun 6pm

£11.00 (£8 concs)

inc. day membership

Box Office 020 7930 3647

Italian born Simona Levi has been based in Spain since 1990, working with such celebrated groups as Fura Dels Baus and General Electrica, and most recently with her own company, Conservas. She is one of the most dynamic personalities in Barcelona's spectacular performance scene. In typically uninhibited style, Simona's *Femina Ex Machina* takes an ironic, lucid and occasionally cruel look at the female condition. Complex machines, films, live music and an acute sense of the absurd combine in creating images of striking originality. The woman who freezes her own tears to savour them later in suckable ice-cube form is just one such memorable figure in a show which throws convention out of the window.

'Vital and intelligent theatre looking for new ways of expression...imaginative and daring'. EL PAIS

Supported by CoPEC
(Culture from Catalonia)

Runs approx 55 mins



This is an adult show containing nudity and material which may offend some people

Ishka Theatre Company

A Red Day

BAC

Thu 17-Sat 19 Jan 8pm

£10.75 (£6.50 concs)

Box Office 020 7223 2223

Intriguing visual theatre from Ireland. A cult hit at the Dublin Fringe Festival, Ishka's debut production brings to life some of Picasso's most famous Cubist images in a kaleidoscope of light, colour, movement, sound and amazing body-masks. Ephemeral and fleeting, unfolding in a land of surreal and incredible happenings, *A Red Day* moves from playfulness to the tragedy of Guernica. Deviser-designer Elaine Bastible trained as a sculptor, and then at the Lecoq School where she developed her passion for mask theatre.

'You have to hand it to Ishka for daring ambition and originality. What extraordinary creations those huge body-masks are, realised stunningly by Bastible and the Company.'

IRISH TIMES

'Beautiful and striking theatre. A talent to watch and encourage'.

NEW YORK THEATRE WIRE

Supported by the Cultural Relations Committee of the Irish Department of Foreign Affairs

Runs approx 60 mins



photos: Clare McKenna

Maybellene & Friends

BAC

Sun 20 Jan 6pm

£10.75 (£6.50 concs)

Box Office 020 7223 2223

There is simply no stopping this gal. Join Maybellene and friends on her glamour crusade, as she spreads a little happiness (and twice as much glitter) in Battersea for one night only.

A camp cabaret spectacular featuring Maybellene in her own mini-musical extravaganzas and supported by a full cast featuring some of the UK's most extraordinary cabaret acts including the fabulous fat fairy, Ballet-hoo.

'Barbie better watch her back: this girl is going to be BIG!'
The Guardian.

Runs approx 80 mins



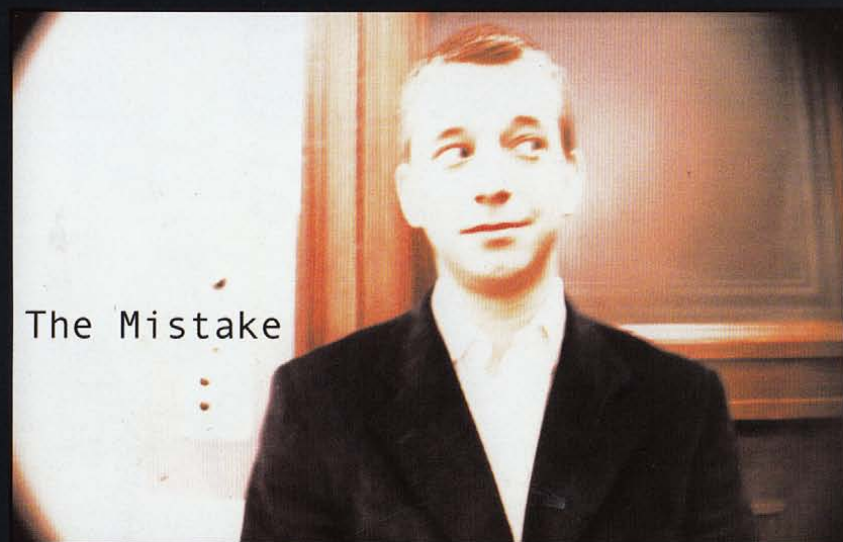
photos: Mike Martin

Mime Festival Scratch Nights

In the successful 'scratch performance' format pioneered by BAC, the Mime Festival and BAC present the first glimpse of new work by three leading British companies in a series of short, informal, unpredictable try-outs. See, hear, find out what THEATRE O, MARCELLO MAGNI and RIDICULUSMUS might be up to next. Be in at the birth of new ideas. Anything might happen, and you will experience it here first.

All Scratch Shows at BAC £4.75 (£3.50 concs)

Box Office 020 7223 2223



Theatre O *The Mistake*

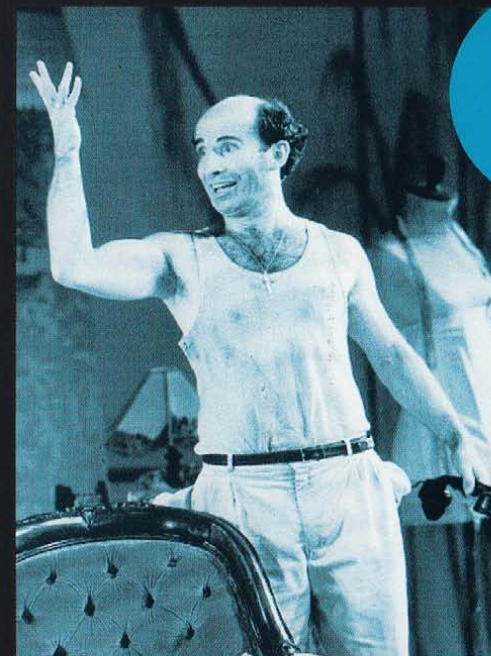
Tue 15 Jan, 8pm

Following its hugely successful *3 Dark Tales* (Total Theatre Award winner at Edinburgh in 2000, internationally toured and featured in BITE'01 at The Barbican) Joseph Alford's THEATRE O has been developing new material. The Festival and BAC host a sneak preview. The group's future plans include a commission from The Barbican for BITE'03.

Marcello Magni *Arlecchino and Zanni*

Tue 22 - Wed 23 Jan, 8pm

Founder-member of Theatre de Complicite, MARCELLO MAGNI offers a first glimpse of a new project exploring the characters of Arlecchino (better known as Harlequin) the father of all comedians, and Zanni - granddaddy of them all. Visual, physical, verbal, irreverent and rebellious energy were their stock in trade, second nature to Marcello and his collaborators - fellow Complicite members, actor-directors Kathryn Hunter and Jos Houben.



Ridiculusmus

Thu 24 Jan, 8pm

Ridiculusmus was winner of the Time Out Live Award 2001. Having recently completed a four month UK tour of *Say Nothing*, Ridiculusmus is taking time out at the start of 2002 to create new work. Catch this chance for an early glimpse of what David and John are working on now - join them for a step into the unknown and tell them what you think about some new Ridiculusmus ideas.

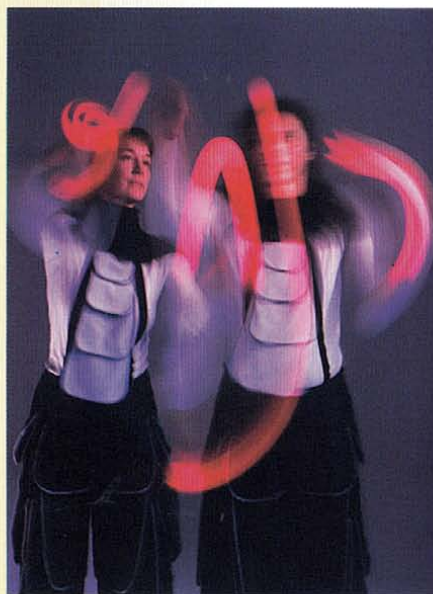


The Circus Space Cabaret

The Circus Space
Sat 19–Sun 20 Jan 8pm.
£14.00 (£10 cones)
020 7613 4141

Love is in the air as The Circus Space embraces romance for this year's Mime Festival Cabaret. There's a sublime aerial duet by The Generating Company's Dane Clarke and Laura Pero; a juggling tango to swoon to by Sean Gandini and Kati Yla-Hokkala; a cocktail of contortion, acrobatics and clown from Jerwood Circus Award winners Kicking the Moon; aerial excitement from The Flying Dudes and the visually ravishing swinging cerceau of Susan Voyticky.

The venue is unique; an old power station that has become Britain's top circus training centre. Overnight it is transformed into a strange but welcoming emporium of entertainment with rope ladders and trapezes dangling from the roof. Come along and be seduced by the events unfolding before you, around you and above you.



Gandini Juggling photo: Hugo Glendinning

Kicking the Moon photo: Lucie Pasquier

ANGELA DE CASTRO

How To Be A Stupid

The Why Not Institute Sat 12–Sun 13 Jan
10am–6pm. £120 for 2 days.

Following its success at last year's festival, Angela De Castro again offers an intensive, two-day introduction to the art of practical clowning and performance craft. The workshop aims to encourage participants to discover their own clown style and/or the clown within. Suitable for beginners, as well as for more experienced performers, in need of a burst of energy and inspiration. Participants must be aged 18+. Brazilian born Angela de Castro has performed and taught clowning all over the world. She has toured with Slava Polunin and with groups such as Ra Ra Zoo, and The Right Size. She is artistic director of The Why Not Institute, an organisation dedicated to all aspects of contemporary clown theatre.

Further information and bookings:

The Why Not Institute 020 8987 6661

email: whynotinstitute@aol.com

Location: The Why Not Institute at The Arts Educational School

14 Bath Road, London W4 1LY Nearest tube: Turnham Green (District Line)

AVNER EISENBERG Clown Theatre

Diorama Arts Centre: Sat 19 Jan 11am–1pm £15.00

Eccentric performing is one of the most personal and paradoxical of theatre forms. It is at once clever, ingenious and brutal; cleverly witty or silent. It can be extremely silly or point out the failure of society. Avner Eisenberg has been performing and teaching internationally for more than twenty years. A workshop for those wishing to develop their clown skills. Participants should have some professional performing experience.

Bookings: 020 7916 5467 (open Mon–Fri 10am–6pm, then answerphone).

email bookings: Avner@diorama-arts.org.uk

Xmas closure for booking line: 23 Dec –2 Jan.

Diorama Arts Centre, 34 Osnaburgh Street, London NW1 3ND.

Tubes: Great Portland Street, Warren Street, Euston Square, Regent's Park all just minutes away. Some parking available. Disabled Access.

Avner The Eccentric in performance at the Purcell Room

DESMOND JONES SCHOOL OF MIME

Physical Story-Telling for the Theatre

Sat 26–Sun 27 Jan 10am–5pm £120

The Desmond Jones School of Mime and Physical Theatre

Originally an actor, trained by Etienne Decroux, Desmond Jones runs Britain's longest-established School of Mime and Physical Theatre. As performer,

director and teacher he has worked on Hollywood movies, West-End theatre, opera, television and with Jacques Lecoq, Keith Johnstone, Mike Alfreds and Monty Python to name just a few. Using story-telling as its basis, this course opens up the enormously wide variety of styles and approaches to mime and physical theatre, from straight theatre to street theatre, with illusion, commedia, corporeal and dynamic physical acting techniques.

Location: St. Luke's Church Hall, Uxbridge Road, London W12 (nearest tube: Shepherd's Bush).
Bookings and information: 020 8747 3537 (phone/fax)

The Registrar, 20 Thornton Avenue, London W4 1QG

e-mail: enquiries@desmondjones.co.uk

NOLA RAE Broaden Your Mime

Diorama Arts Centre: Sat 12 & Sun 13 Jan 11am–4pm. £120 for 2 days.

An intensive workshop on the art of letting the body do the talking. Physical and mental articulation for those who want to expand their comic theatre skills. Previous performance experience desirable.

Nola Rae is one of this country's most distinguished performing artists. Since founding her company, London Mime/Theatre, in 1975, she has performed, taught and directed across the globe.

Location: Diorama Arts Centre – see Avner info above for all venue details.

Bookings: as for Avner, but using e-mail address of Nola@diorama-arts.org.uk

www.nolarae.btinternet.co.uk

THEATRE DE L'ANGE FOU & ECOLE DE MIME CORPOREL DRAMATIQUE

'Making Visible the Invisible' (E.Decroux)

Sat 19–Sun 20 Jan 11am to 2pm. £60 Ecole de Mime Corporel Dramatique:

A two day intensive workshop offering the opportunity to explore the infinite theatrical expression of the human body through the precise and creative method of Corporal Mime. Led by Steven Wasson and Corinne Soum, the last assistants of Etienne Decroux, directors of the Ecole de Mime Corporel Dramatique, and members of their company, Theatre de l'Ange Fou, this training will be divided into several areas: Technique, Improvisation and Repertoire.

Location: Belgravia Workshops, 157–163 Marlborough Road, London N19 4NF.

Bookings: 020 7263 9339

Transport: 10 minutes walk from Archway Tube Station.

(Marlborough Road is off Holloway Road towards Hornsey Road).

By Bus: 271, 43, 210.



BAC

Lavender Hill SW11 5TN
020 7223 2223
www.bac.org.uk

Shows:
Ishka Theatre Company
Maybellene
Theatre 0 scratch night
Marcello Magni scratch night
Ridiculusmus scratch night

In Person:
Mon 10.30am-6pm, Tue-Sat
10.30am-9pm, Sun 4-7pm.
Christmas closure: 24-26 Dec and
31 Dec-1 Jan, inclusive.

By Phone:
020 7223 2223 until 6pm (7pm
on Sundays). Mastercard, Visa and
Switch welcome.

By Post:
Send cheque payable to 'BAC' to
the above address, enclosing a
first class s.a.e.

By Email:
boxoffice@bac.org.uk
Reservations:
Unpaid reservations should be
collected one hour before the
performance. BAC cannot
guarantee late admission.

Transport:
Clapham Junction main line
station from Waterloo and
Victoria. Exit on Lavender Hill,
turn left out of the station and
walk down the hill. Cross the
junctions with Falcon Road and
Latchmere Road. BAC is on the
left just after Theatre Street.
Allow 10 mins.
Buses: 35, 37, 345, 77, 77a 115,
319, 337, C3, G1.
Tube: Victoria Line to Vauxhall,
then 77 or 77a bus (allow 20
mins for bus journey) to Lavender
Hill.

The Circus Space

Powerhouse of Britain's Contemporary Circus

Coronet Street N1 6HD
020 7613 4141
www.thecircusspace.co.uk

Show:
The Circus Space Cabaret

In Person/by phone:
Open Mon-Fri 9am-10pm,
Sat 1.30pm-6pm, Sun 1.30pm-
9pm (answering machine at other
times)
Christmas Closure: 22 Dec to 1
Jan, inclusive.

Email:
enquiries@thecircusspace.co.uk
Web Site:
www.thecircusspace.co.uk

Transport:
By Tube: Old Street (Northern
Line, City Branch). Take Exit 2,
then a 4 minute walk east along
Old Street, past the fire station on
the left, towards the Holiday Inn
Express hotel. Turn left into
Pitfield Street, then right into
Coronet Street. The Circus Space
is at the end on the left.
By Bus: 26, 43, 55, 242, 243, 271
Disabled Access: all shows are
accessible to wheelchair users
and there is an adapted toilet on
the ground floor.

CENTRAL ADVANCE BOOKING FACILITY

We are offering you the facility to book all your
tickets in advance by post, if your order reaches the
Mime Festival office by Thursday 20 December.

A booking form is available from our website at
www.mimefest.co.uk
Or we can fax you a copy if you ring us on
020 7637 5661

Croydon Clocktower

Katharine St. Croydon

Katherine St. Croydon CR9 1ET
020 8253 1030
www.croydon.gov.uk/
clocktower

Show:
Diquis Tiquis

In Person/by phone:
Open: Mon-Sat 10am-8.30pm,
Sun 12noon-8.30pm
Christmas closing: 24-27 Dec &
31 Dec-1 Jan inc

Transport:
By Train: a 10 minute walk from
either East or West Croydon
stations. Frequent trains run from
Victoria, London Bridge and Kings
Cross Thameslink.
By Bus: close to the major
Croydon bus routes and 10
minutes walk from West
Croydon bus station.
By Tram: nearest stop is George
Street.
By Car: nearest car park is
Fairfield in Barclay Road or Surry
Street in Scarbrook Road.

Disabled Access:
ramped access from street level
and lifts to all floors. Accessible
adapted toilets on both ground
and first floors. Wheelchair
users should advise the venue
management of their visit, in
advance. Minicom bookings:
020 8253 1027

ICA

Institute of Contemporary Arts

The Mall SW1Y 5AH
020 7930 3647
www.ica.org.uk

Shows:
Fabrik
Basil Twist
Lightwork
Conservas

In Person/by phone:
Mon-Sun 12 noon-9.30pm (most
busy between 6-9pm).
By Fax:
020 7873 0051
allow 24 hours for processing.
Web Site:
www.ica.org.uk
By Email:
tickets@ica.org.uk
allow 24 hours for processing
By Post:
Send cheque made payable to
'ICA Ltd' with a first class s.a.e. to
above address, or provide credit
card details adding 50p for
processing to: Ticket Office, ICA,
The Mall, London SW1Y 5AH.
Christmas closure: 24-26 Dec and
31 Dec-1 Jan, inclusive.

Transport:
The ICA is at the foot of the Duke
of York steps, 5 minutes from
Piccadilly Circus and 3 minutes
from Trafalgar Square.
Nearest Tubes: Charing Cross or
Piccadilly Circus.

NT

Royal
National
Theatre

Royal National Theatre
South Bank SE1
Information:
020 7452 3400
www.nationaltheatre.org.uk

Show:
Sharmanka

It is not necessary to book for this
event. The foyer is open from
10am, Monday to Saturday.
Performances are on the hour
until 5pm, then at 6.45pm and
10.45pm

Transport:
By Tube: Waterloo, or cross the
river from Temple, Embankment
or Charing Cross.
By Bus:
1,4,26,68,76,77,149,168,171,176,8
8,211,341,501,505,507,521,D1,P11,
X68. By Train: Waterloo



FOR DETAILS OF
DISABLED ACCESS
PLEASE CONTACT
THE VENUES

A LARGE TEXT
VERSION OF
EVENT LISTINGS IS
AVAILABLE ON
OUR WEBSITE AT
WWW.
MIMEFEST.CO.UK

sbc

Royal Festival Hall

incorporating The Purcell Room
and Queen Elizabeth Hall
Belvedere Road SE1 8XX
020 7960 4242
www.rfh.org.uk

Shows:
Diquis Tiquis
Avner The Eccentric
Josef Nadj
Eric Bouvron (free)
Compagnie 111
Leandre-Claire

In Person:
RFH Mon-Sun 10am-9pm.
QE/H/Purcell Room 45 mins before
performance.
By Phone:
020 7960 4242 from 9am-9pm
(Sun 9.30am-9pm). Handling
charge £1.50 per phone
transaction.

By Email:
boxoffice@rfh.org.uk
By Fax:
020 7921 0821

On-Line:
www.rfh.org.uk No booking fee.
By Post:
Cheques should be made payable
to 'South Bank Centre' and sent
with first class s.a.e. or add 50p
postage to: Box Office, Royal
Festival Hall, London SE1 8XX.
Leave amount blank but indicate
upper limit. Please quote your
name, address and phone
numbers.

Minicom Textphone for deaf or
hard-of-hearing: 020 7921 0921
Christmas Closure: from 5pm on
24 Dec, re-opening at 1pm on 26
Dec and from 6pm on 31 Dec, re-
opening at 2pm on New Year's
Day.

Transport:
as for Royal National Theatre.

LONDON INTERNATIONAL MIME FESTIVAL 2002

DATE	PURCELL ROOM	QEH	QEH FOYER	RNT FOYER	ICA	BAC	CIRCUS SPACE	DIQUIS TIQUIS ON TOUR
Sat 12	DIQUIS TIQUIS 8pm			SHARMANKA 11 - 6.45pm & 10.45pm				Purcell Room
Sun 13	DIQUIS TIQUIS 8pm				FABRIK 8pm			Purcell Room
Mon 14	DIQUIS TIQUIS 8pm			SHARMANKA 11 - 6.45pm & 10.45pm	FABRIK 8pm			Purcell Room
Tue 15	DIQUIS TIQUIS 8pm			SHARMANKA 11 - 6.45pm & 10.45pm	FABRIK 8pm	THEATRE 0 8pm		Purcell Room
Wed 16	SPYMONKEY 8pm			SHARMANKA 11 - 6.45pm & 10.45pm				
Thu 17	AVNER 8pm			SHARMANKA 11 - 6.45pm & 10.45pm	BASIL TWIST 8pm	ISHKA 8pm		Brighton 8pm
Fri 18	AVNER 8pm	JOSEF NADJ 7.45pm		SHARMANKA 11 - 6.45pm & 10.45pm	BASIL TWIST 7 & 9.30pm	ISHKA 8pm		Brighton 8pm
Sat 19	AVNER 8pm	JOSEF NADJ 7.45pm	ERIC BOUVRON 1pm	SHARMANKA 11 - 6.45pm & 10.45pm	BASIL TWIST 8pm	ISHKA 8pm	CABARET 8pm	Croydon 8pm
Sun 20	AVNER 4pm	JOSEF NADJ 6pm	ERIC BOUVRON 1pm			MAYBELLENE 6pm	CABARET 8pm	
Mon 21	COMPAGNIE 111 8pm			SHARMANKA 11 - 6.45pm & 10.45pm	LIGHTWORK 8pm			
Tue 22	COMPAGNIE 111 8pm			SHARMANKA 11 - 6.45pm & 10.45pm	LIGHTWORK 8pm	MARCELLO MAGNI 8pm		Leicester 8pm
Wed 23	COMPAGNIE 111 8pm			SHARMANKA 11 - 6.45pm & 10.45pm	LIGHTWORK 8pm	MARCELLO MAGNI 8pm		Leicester 8pm
Thu 24	LEANDRE-CLAIRE 8pm			SHARMANKA 11 - 6.45pm & 10.45pm		RIDICULUSMUS 8pm		
Fri 25	LEANDRE-CLAIRE 8pm			SHARMANKA 11 - 6.45pm & 10.45pm	CONSERVAS 8pm			
Sat 26	LEANDRE-CLAIRE 8pm			SHARMANKA 11 - 6.45pm & 10.45pm	CONSERVAS 8pm			
Sun 27	LEANDRE-CLAIRE 6pm				CONSERVAS 6pm			